

5KVA-120V maintenance SOP

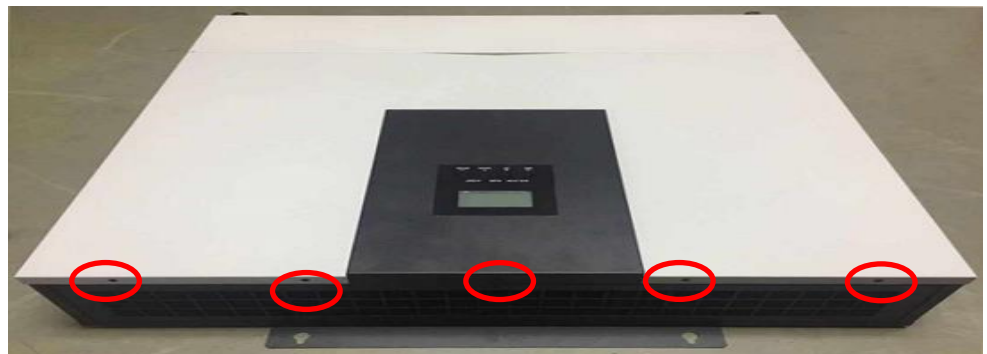
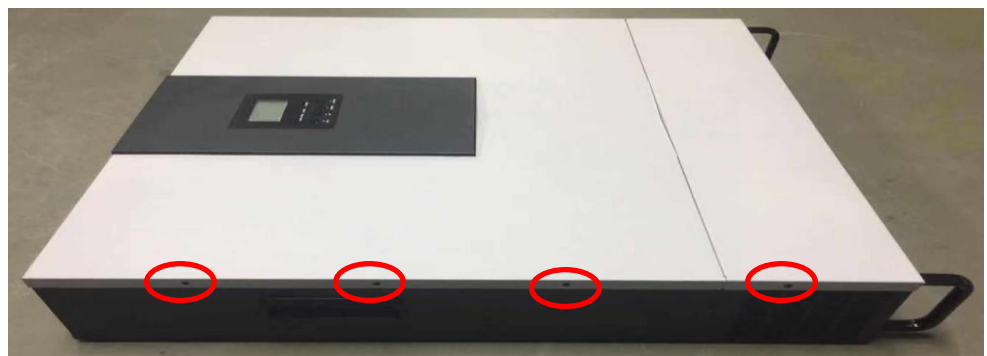


After our lab simulation test, If the short circuit cap is not installed in the control board on the right, will result in **【87】** . Therefore, you can use the steps below to solve fault **【87】** short circuit cap

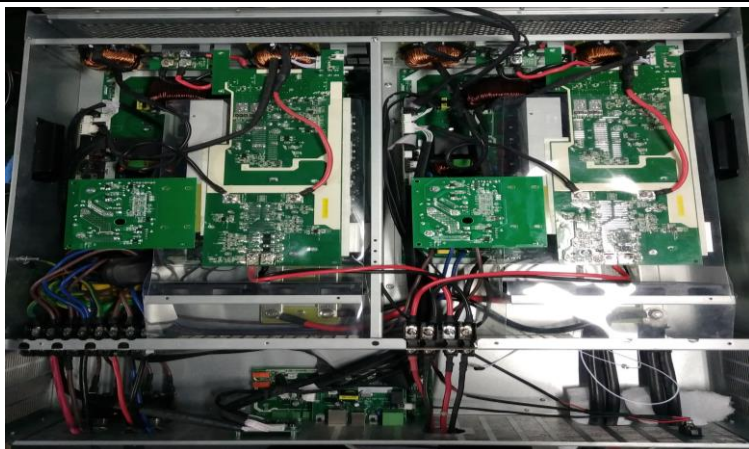
1.1 Open the case

Remove screws on the top cover



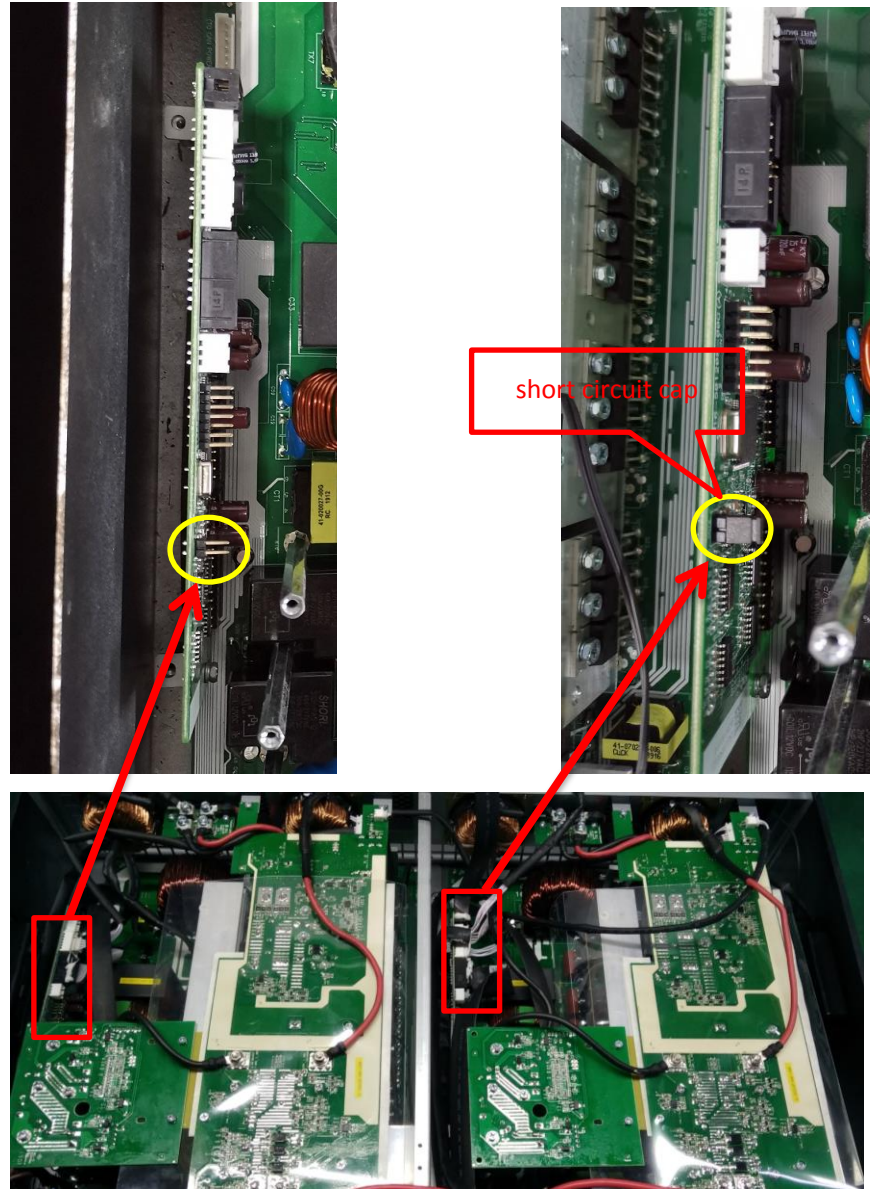


Open the top cover
carefully,



1.2 Check the control board

Check whether the right side of the control board installed short-circuit cap, if not installed, please install the short-circuit cap



Through the above steps to check on the right side of the control board short-circuit cap good after installation, please plug in the battery whether boot validation will quote **【87】** the ERROR, if the problem remains, please contact your installer.

Note: When you put the new control board on the main board, please make sure that the connection is correct and tighten. Don't forget to put the screws and cables back.